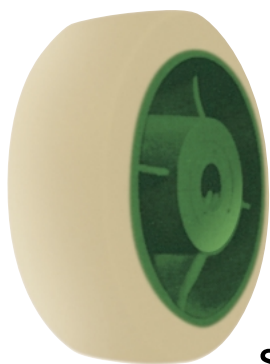


## SUW型 重量用鋳物ウレタン車



SUW-150

車輪径 mm	型 式	許容荷重 kgf	車輪幅 mm	ボス幅 mm	軸径 mm	自重 kg
100	SUW-100×50	290	51	54	17	1.7
100	SUW-100×65	380	64	70	17	2.2
130	SUW-130×50	340	51	54	20	2.3
130	SUW-130×65	450	64	70	20	3.2
150	SUW-150×50	400	51	57	25	2.5
150	SUW-150×65	510	64	70	25	3.3
150	SUW-150×75	620	76	82	25	3.9
150	SUW-150×100	870	102	108	30	6.6
180	SUW-180×50	470	51	57	25	3.5
180	SUW-180×65	620	64	70	25	4.3
180	SUW-180×75	750	76	82	25	5.3
200	SUW-200×50	500	51	57	25	3.8
200	SUW-200×65	650	64	70	25	5
200	SUW-200×75	760	76	82	25	5.6
200	SUW-200×90	900	89	95	30	7.9
250	SUW-250×65	810	64	70	30	7.5
250	SUW-250×75	940	76	82	30	8.7
250	SUW-250×90	1100	89	102	30	12.3
250	SUW-250×100	1250	102	114	40	15.4
300	SUW-300×65	980	64	82	30	9.3
300	SUW-300×75	1130	76	82	30	10.9
300	SUW-300×90	1350	89	99	30	13
300	SUW-300×100#6	1500	102	114	30	14.6
300	SUW-300×100#8	1500	102	114	40	13.6
300	SUW-300×125	1900	125	133	50	18.5
300	SUW-300×150	2300	150	160	50	22
360	SUW-360×75	1350	76	82	35	15.5
360	SUW-360×90	1600	89	102	35	18.8